

# Remaining a great place to work when work goes virtual

CCMA Member Seminar, March 2021

Graham McKane

Director, MLCC, Service & Operations, Lodging, TPG















**Travel** is a  
**force** for **good**.

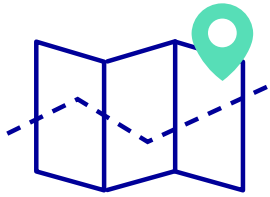




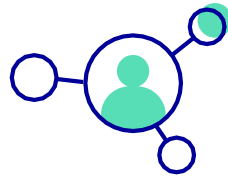
An amazing physical space is great...



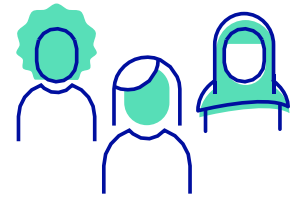
# ... but how have we remained great through the pandemic?



**Extensible  
Readiness**



**Proactive  
Adaptability**



**Emotional  
Investment**





**“Sometimes, we don’t  
know that we are ready  
until someone tells us we  
are.”**

**Srividya Srinivasan**



# We were ready for this and we leveraged it



**Enabling Technology**



**Supporting our People**



**“And the most successful people are those who accept, and adapt to, constant change. This adaptability requires a degree of flexibility and humility most people can’t manage.”**

**Paul Lutus**



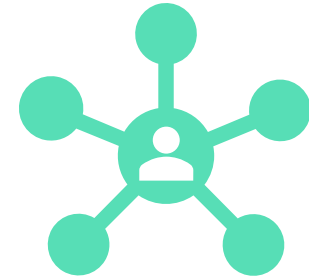
# We predicted and adapted to the changing circumstances



**Responding to a downturn**



**Taking the time to understand  
impacts and consider next steps**



**Multiple options to effectively  
deploy our team**



**“The more emotional investment we put in the people around us, the more life and longevity surrounds us.”**

**Lee Johnson**



# We emotionally invested in our teams – because that's just who we are



**Coaching as a way of life**



**Growing our EQ**



**Including consciously**

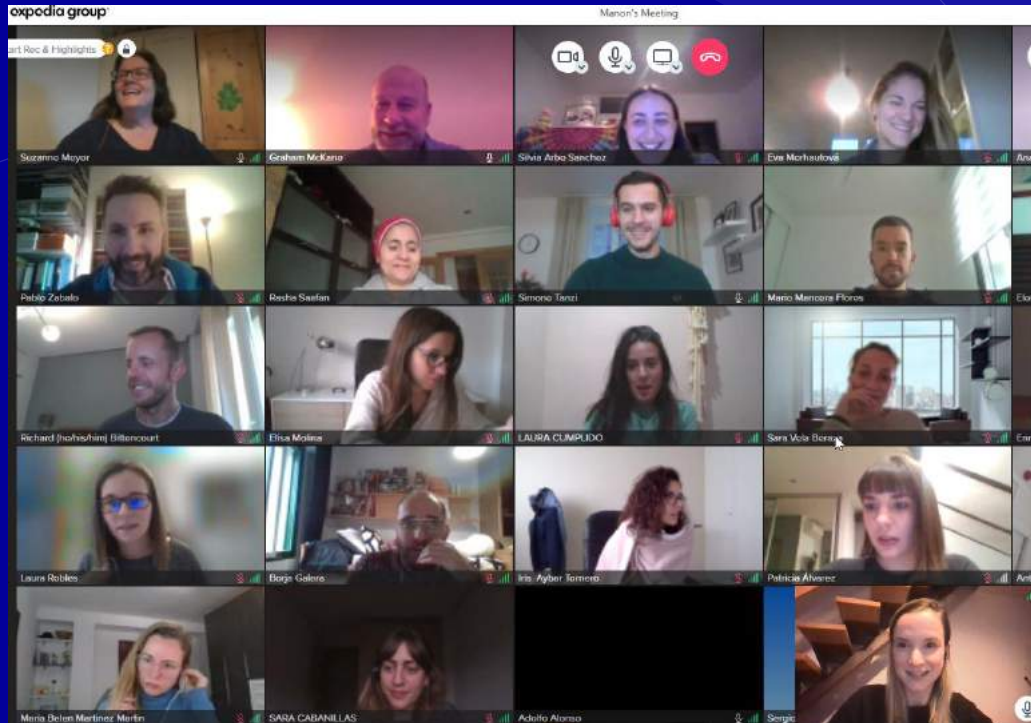
80%

LEAP





# ... even in a virtual world



enthuse



# Keeping up morale – even while socially distancing





## Virtual Pride



## Inclusion Cafes







**Travel  
will  
rebound**





